



**Small Hole Drilling EDM Machine  
703A**

## Specification

Model	703A
Machine Size	1000*800*2000mm
Machine Weight	950KG
Work table Size	550*360mm
X*Y*Z travel	350*250*(380+300)mm
Max Loading	350kg
Drill Diameter	Φ0.15~Φ3.0mm
Max Drill Depth	400mm
Max Pressure of Working water	140kg/ cm <sup>2</sup> (14Mpa)
Working tank Dimension	800*450mm
Max Diameter to Depth Ratio	≥300
Machine Weight	900kg
Maximum Current	30A
Working material	Steel/aluminum/copper/ kinds of conductors
Working fluid	water/Ion free water
Maximum Drilling Speed	30-60mm (Φ1.0)

## Feature

Drilling capacity 0.15mm-3.0mm

Z axis adopt servo motor fast move

Z axis adopt Taiwan Hiwin linear guide way

X,Y,Z axis adopt ball screw

Imported special high pressure water pump

Drilling depth setting

Z axis NC controlled(one buttons touch to finish one hole drilling,  
perfect for mass hole drilling job )

High rigidity machine structure

## Machine Photos



## Machine Construction



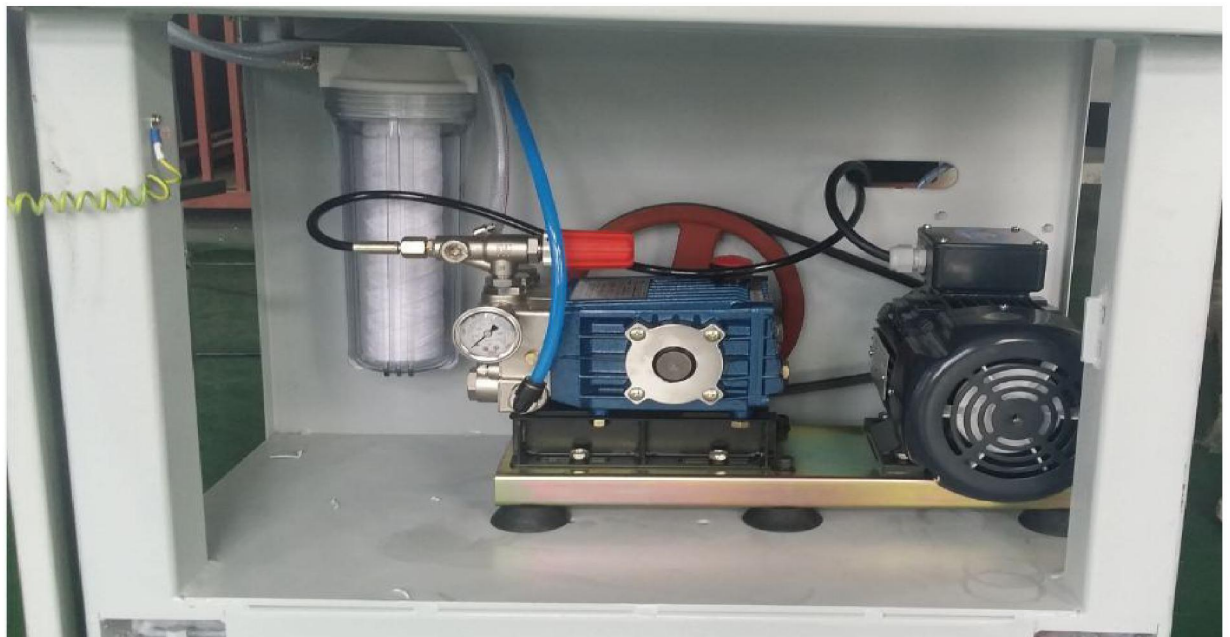
## Electrical Design



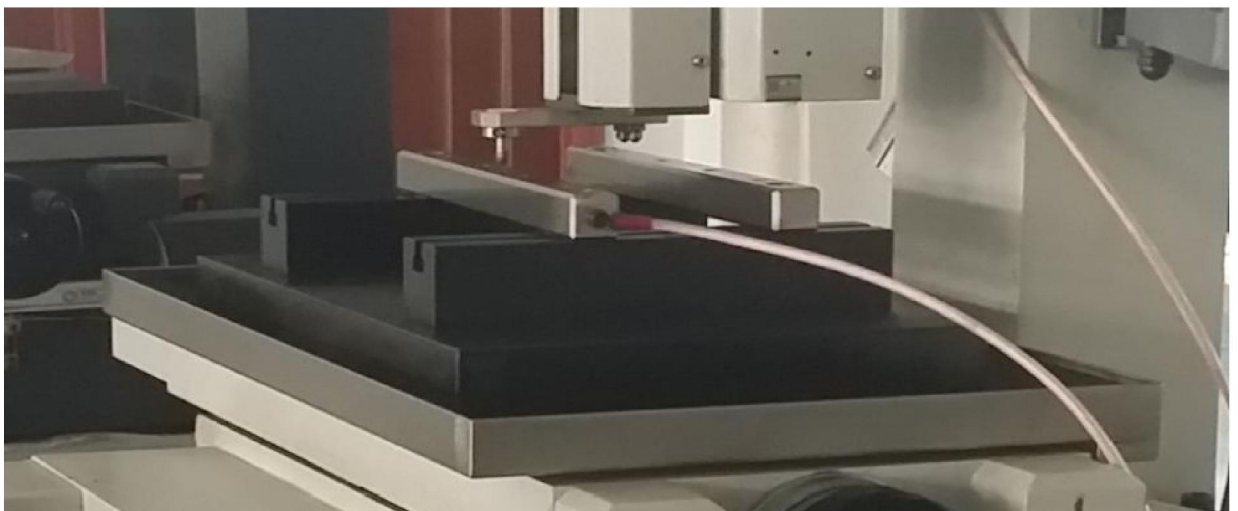
Hiwin Linear guidway(2 side) and servo motor



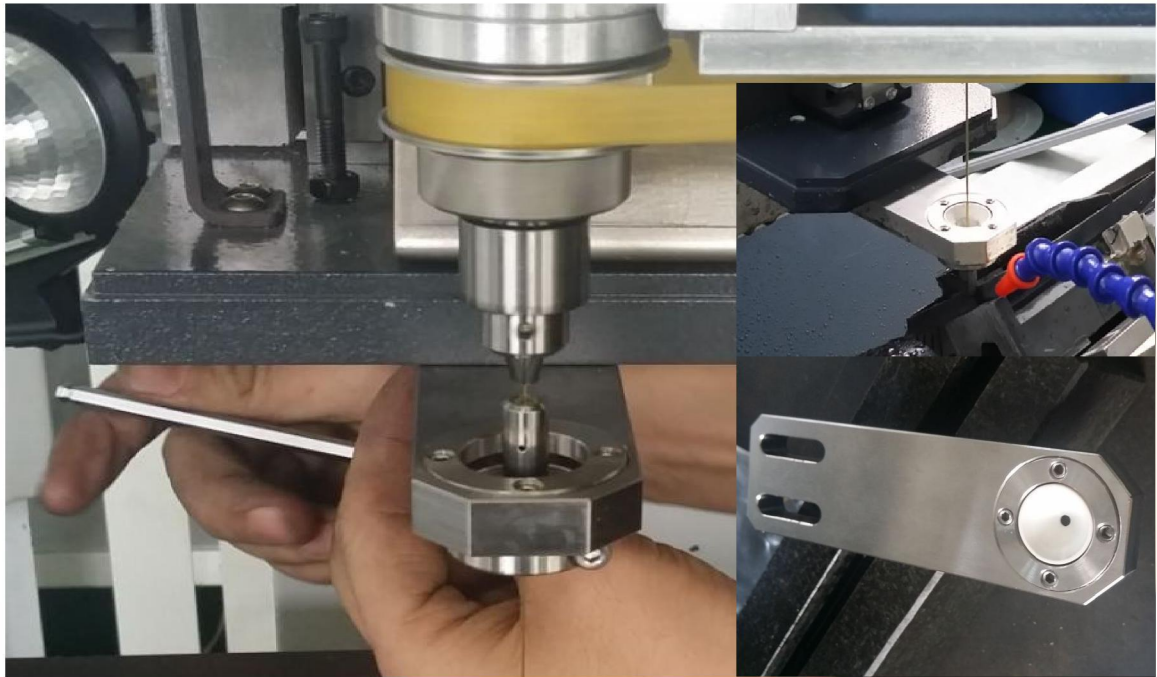
Imported quality pump



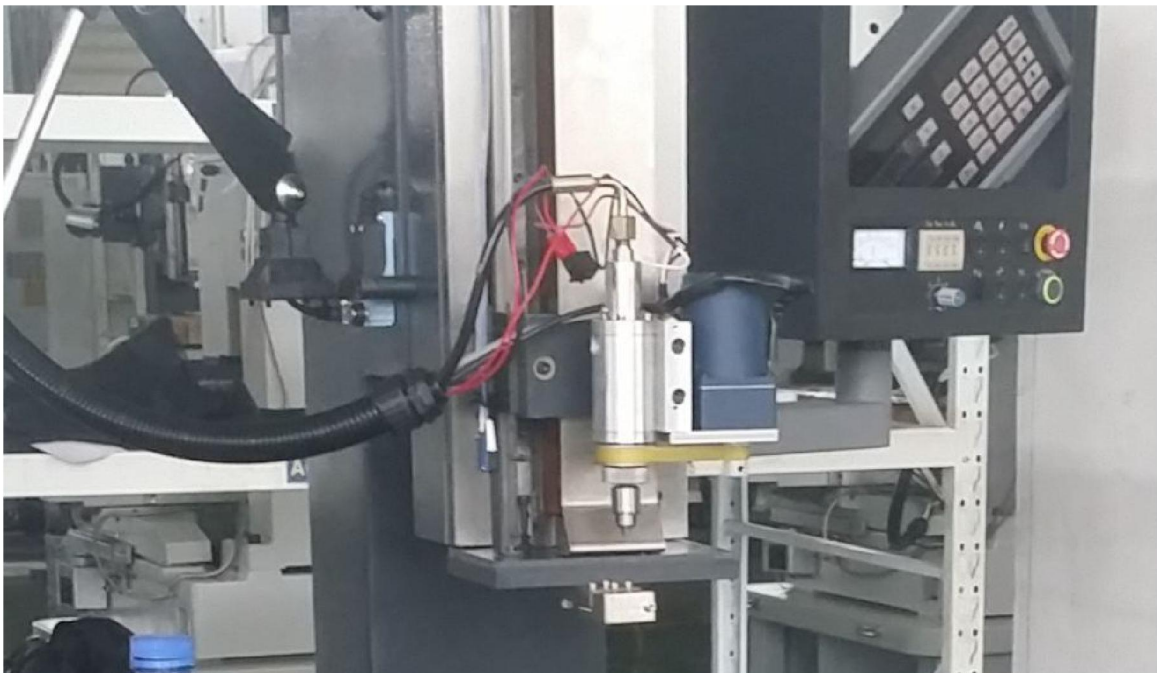
Marble Worktable



High Precision guider chucker  
(compare with other company traditional chucker please)



High Precision Quality Spindle Set



Production Line

